



Introduction to

# **The Elder Abuse Guide for Law Enforcement**

Julie Schoen, JD | Deputy Director  
National Center on Elder Abuse NCEA  
[Julie.Schoen@med.usc.edu](mailto:Julie.Schoen@med.usc.edu)

Lauren Rosell | EAGLE Project Manager  
Keck School of Medicine USC  
[Lauren.rosell@med.usc.edu](mailto:Lauren.rosell@med.usc.edu)

# About Us

The Elder Abuse Guide for Law Enforcement

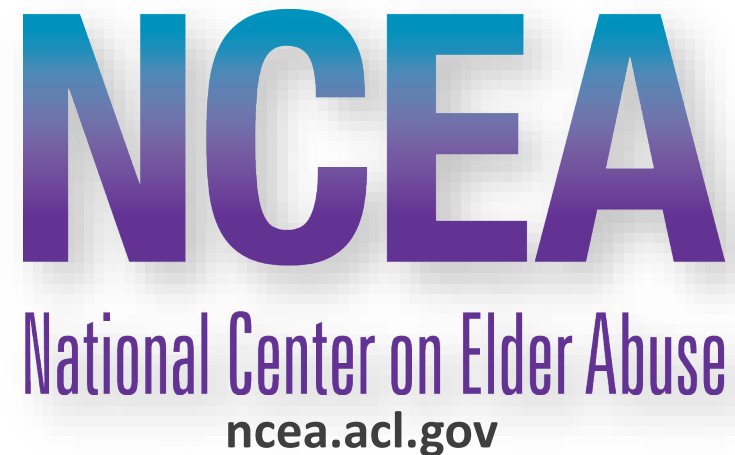
- Background
- Learning Objectives
- Site Tour
- Types of Elder Abuse, quick reference



## Our Mission



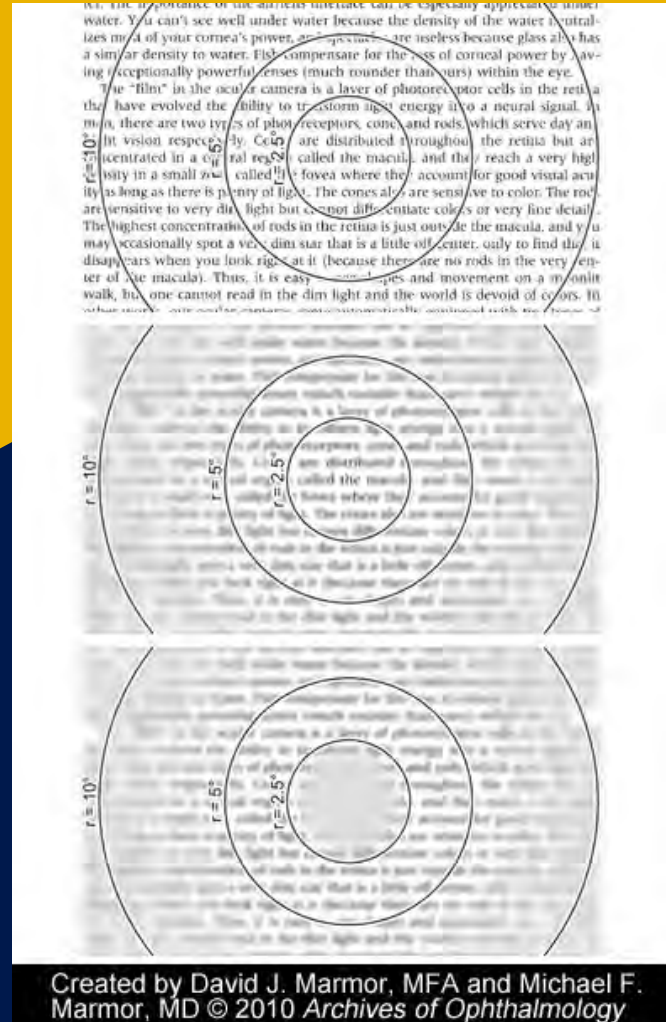
To improve the national response to elder abuse, neglect, and exploitation by gathering, housing, disseminating, and stimulating innovative, validated methods of practice, education, research, and policy.



# Social Isolation- A Major Factor in the Cause of EA

Occurs in many ways:

- Loss of visual cues
  - *Ex-Macular Degeneration*
- Loss of auditory cues
  - *Can you hear me now?*
- Limitations with Mobility
  - *Wheelchairs/walkers*
  - *Loss of drivers license*







# Polling Question 1:

The Elder Abuse Guide for Law Enforcement

**What barriers do you encounter when building an elder abuse case?**

- (A) Inability to easily find the corresponding regulations
- (B) Trouble identifying elder abuse signs and appropriate actions
- (C) Difficulty interviewing an older adult with dementia
- (D) All of the above



# Background

The Elder Abuse Guide for Law Enforcement

## Development

EAGLE is a **FREE** tool that helps officers effectively identify and investigate potential elder abuse cases

- Funded by the Department of Justice and developed by elder abuse experts at the University of Southern California
- EAGLE was also cross tested by law enforcement departments across the country
- EAGLE is for everyone! Feel free to access and use at will <http://eagle.trea.usc.edu/>

## EAGLE Tools and Capabilities

In addition to quick reference educational information on various forms of elder abuse, EAGLE also provides:

- Assistance in documenting a case for prosecution
- ZIP-code-based community resources locator
- State-by-state penal codes relating to elder abuse



# Roll Call Training Videos

The Elder Abuse Guide for Law Enforcement

Watch the below Case Examples, documenting how law enforcement and legal prosecuted common financial abuse cases



# Site Tour

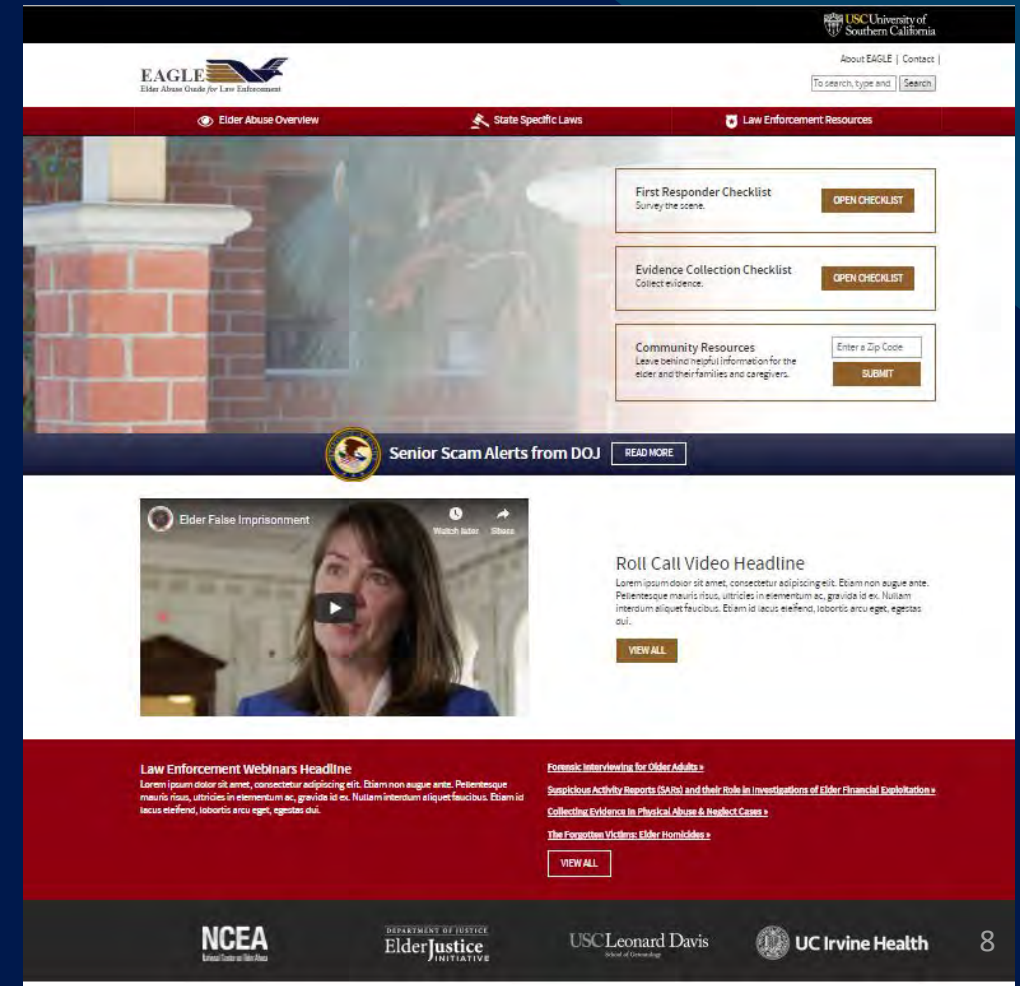
## The Elder Abuse Guide for Law Enforcement

EAGLE Phase 2 provides up to date elder abuse alerts, roll call videos, and webinars developed by the Department of Justice and the International Association of Chief of Police

### ACTION ITEM:

Sign up for the EAGLE newsletter and receive alerts when new information is posted to the website

**eaglehelp@usc.edu**







# Site Tour

The Elder Abuse Guide for Law Enforcement



# Polling Question 2:

The Elder Abuse Guide for Law Enforcement

**How many individuals over the age of 60 are abused?**

- (A) 1 in 20
- (B) 1 in 5
- (C) 1 in 10
- (D) 1 in 50



# Roll Call Training Videos

The Elder Abuse Guide for Law Enforcement

Watch the below Case Examples, documenting how law enforcement and legal prosecuted common financial abuse cases





# Financial Abuse

The Elder Abuse Guide for Law Enforcement



# Financial Abuse

## The Elder Abuse Guide for Law Enforcement

- **Financial Elder Abuse** is using an older adult's money or assets (pension, home, social security checks) contrary to their wishes, needs or best interested, or for the abuser's personal gain
- **Undue influence** is when a person of trust manipulates and takes advantage of a vulnerable elder to gain control of money, property or life—either directly or through power of attorney, trust, marriage, adoption, or inheritance.



# Signs of Financial Abuse

The Elder Abuse Guide for Law Enforcement

- Changes of trusts, wills, deeds for the benefit of the abuser
- Large purchases for the abuser's benefit
- Inappropriate financial reimbursement for services to the older adult victim
- Caregiver "living off" the older adult



# Ask Yourself

## The Elder Abuse Guide for Law Enforcement

- What is the victim's understanding of their financial situation?
- Do they have a durable power of attorney? If so, can you see it? Who is named as having power of attorney for the older adult? (Take a copy or a picture!)
- Is the person having power of attorney for the older adult abusing their authority?
- Is the older adult's money being used for their care?
- Who pays the bills?





# Take Action

## The Elder Abuse Guide for Law Enforcement

- Use the [First Responder Checklist](#) to document whether there have been any missing funds, sudden changes in a will, or new credit card applications. Also make note of the victim's overall level of independence and functioning.
- Collect Power of Attorney (POA) documents for finances and any other relevant financial documents available on-scene.
- Multiple types of elder abuse may be present. Explore and document the possibility of other types of abuse.

**Development Note:** active link to First Responder Checklist





**We want to hear from you! [eaglehelp@usc.edu](mailto:eaglehelp@usc.edu)**

You may also contact us at  
**National Center on Elder Abuse NCEA**  
1-855-500-3537 (ELDR)  
[ncea-info@aoa.hhs.gov](mailto:ncea-info@aoa.hhs.gov)  
<https://ncea.acl.gov/>

USC Center on Elder Mistreatment website:  
<http://eldermistreatment.usc.edu/> or [www.trea.usc.edu](http://www.trea.usc.edu)

We also thought you might like to use-STEAP....

# Supports and Tools for Elder Abuse Prevention (STEAP) Initiative



National Center on Elder Abuse (NCEA), in partnership with the National Association of Area Agencies on Aging (n4a), launched the **STEAP (Supports and Tools for Elder Abuse Prevention) Initiative** in an effort to educate and empower communities to create a sturdy structure of support to notice, report, and prevent elder abuse.

The centerpiece of this Initiative is a **toolkit** with practical and customizable elder abuse education and outreach tools.

Download and customize the toolkit at [nceausc.tk/STEAP](https://nceausc.tk/STEAP)



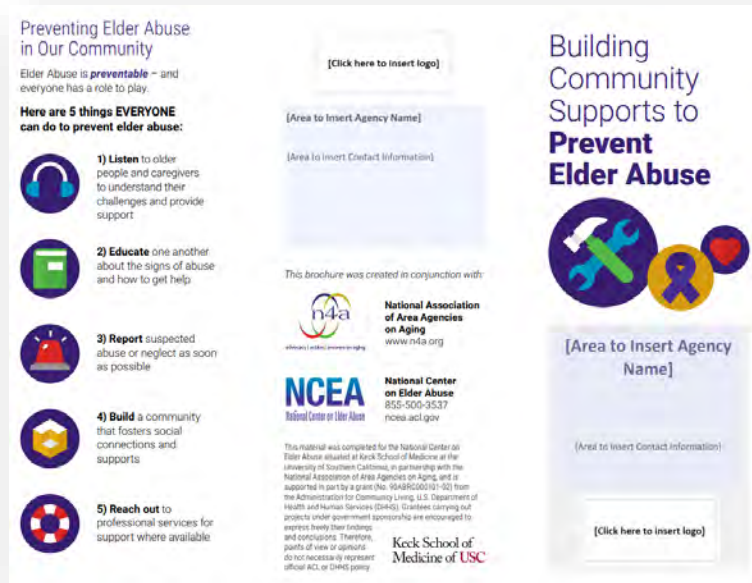
**NEW! FREE and ready-to-use** materials  
to engage and educate your community  
about the role everyone can play in  
**preventing elder abuse.**



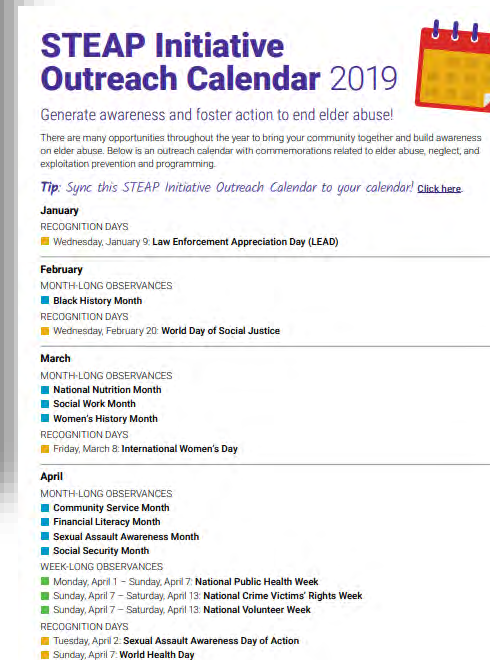
Keck School of  
Medicine of **USC**

# Customizable & ready-to-use outreach tools nceausc.tk/STEAP

## Fact sheets and brochure



## Presentation template & evaluation form



Outreach calendar for year-round  
elder abuse prevention programming



# Customizable & ready-to-use outreach tools

## **ncausc.tk/STEAP**

**Add your own logo,  
contact information,  
and local elder abuse  
reporting numbers.**

Instructions:  
**ncausc.tk/STEAPCI**

Contact us at 1-855-500-3537 or  
[ncea-info@aoa.hhs.gov](mailto:ncea-info@aoa.hhs.gov) for  
questions or assistance.

Building  
Community  
Supports to  
**Prevent  
Elder Abuse**



**[Agency Name]**

**[Contact Information]**

**Report suspected abuse or neglect  
in the community setting:**

**[Insert Local  
APS Contact Info]**

**Report suspected abuse or neglect  
in long-term care facilities:**

**[Insert LTCOP Contact Info]**

**Abuse reports may also be made to the  
local law enforcement agency:**

**[Insert Local LE Contact Info]**



# Polling Question 3:

The Elder Abuse Guide for Law Enforcement

**Do you think that EAGLE will be helpful to you when developing an elder abuse case?**

- (A) Strongly Agree
- (B) Agree
- (C) Undecided
- (D) Disagree
- (E) Strongly Disagree



# Thank You.



EAGLE Help



(626) 457 - 6619



eaglehelp@usc.edu



[www.eagle.trea.usc](http://www.eagle.trea.usc).

**National Center on Elder Abuse NCEA**

1-855-500-3537 (ELDR)

[ncea-info@aoa.hhs.gov](mailto:ncea-info@aoa.hhs.gov)

<https://ncea.acl.gov/>