



Safety by Design: Developing a Curriculum for APS for the Welfare of APS Personnel

Division of Aging and Adult Services, AZ

© 2019 Department of Economic Security, Arizona All Rights Reserved

Overview

Safety Statistics

Background & Analysis

Process & Structure

Computer Based Learnings

Classroom Workshop

Results

Next Steps



Go to www.menti.com and use the code 29 71 98



Why is it important to train for safety in APS?

 Mentimeter



 0

Go to www.menti.com and use the code 29 71 98



i

What are common safety concerns you have for your Investigators?

 Mentimeter



 0

Safety Statistics

High Instance of Safety Issues

- 44% Faced Personal Safety Issues (NASW 2004)
- 92% Reported Encounters (Ghesquiere et al. 2018)
- Average of 7.74 Incidents Over Career
- 37% Physically Assaulted
- 31% Attacked by Dog
- 37% Insect Infestations

Safety Statistics

Not Addressed Adequately by Employers

- 30% Safety was Inadequately Addressed by Employers (NASW 2004)
- Lack of Concern for Safety Linked to Turnover (Williams et al. 2011)
- Far Greater Research on CPS (Ghesquire et al. 2018)
- Emphasis on Research is Client Safety
- Little Quantitative Study on APS Safety

Go to www.menti.com and use the code 29 71 98

How much time is devoted to formal safety training in your State/County?

Mentimeter



● OJT Only

● 1 -2 hours

● 3 -4 hours

● 5+ hours

Go to www.menti.com and use the code 29 71 98



Does your State/County have a Safety Policy?

Mentimeter



0

Background & Analysis

Arizona APS

Encountering Avoidable Situations

Limited Safety Training

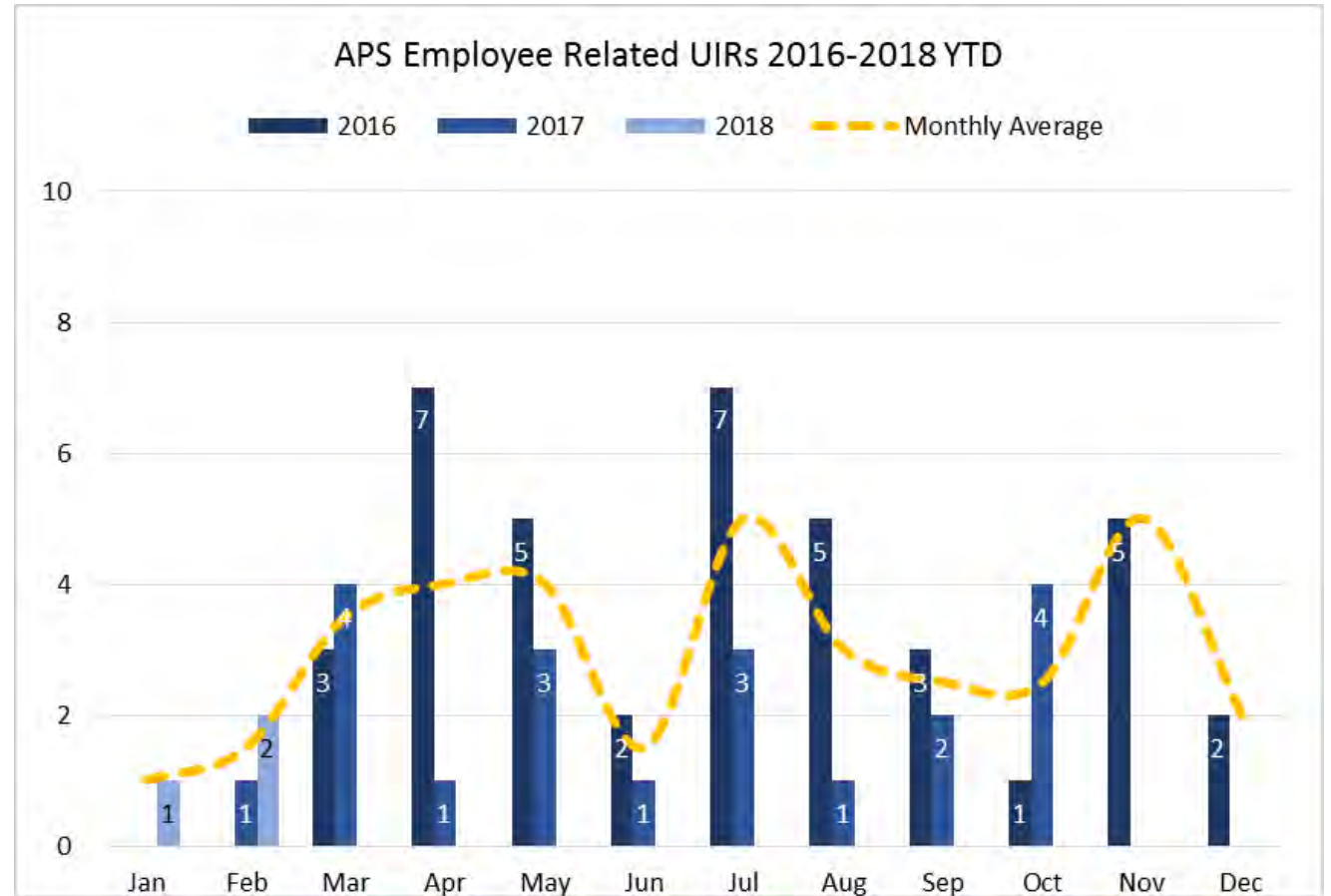
New Safety Policy Release



Analysis

Avg. Incidents 3/mo.

Likely Underreporting

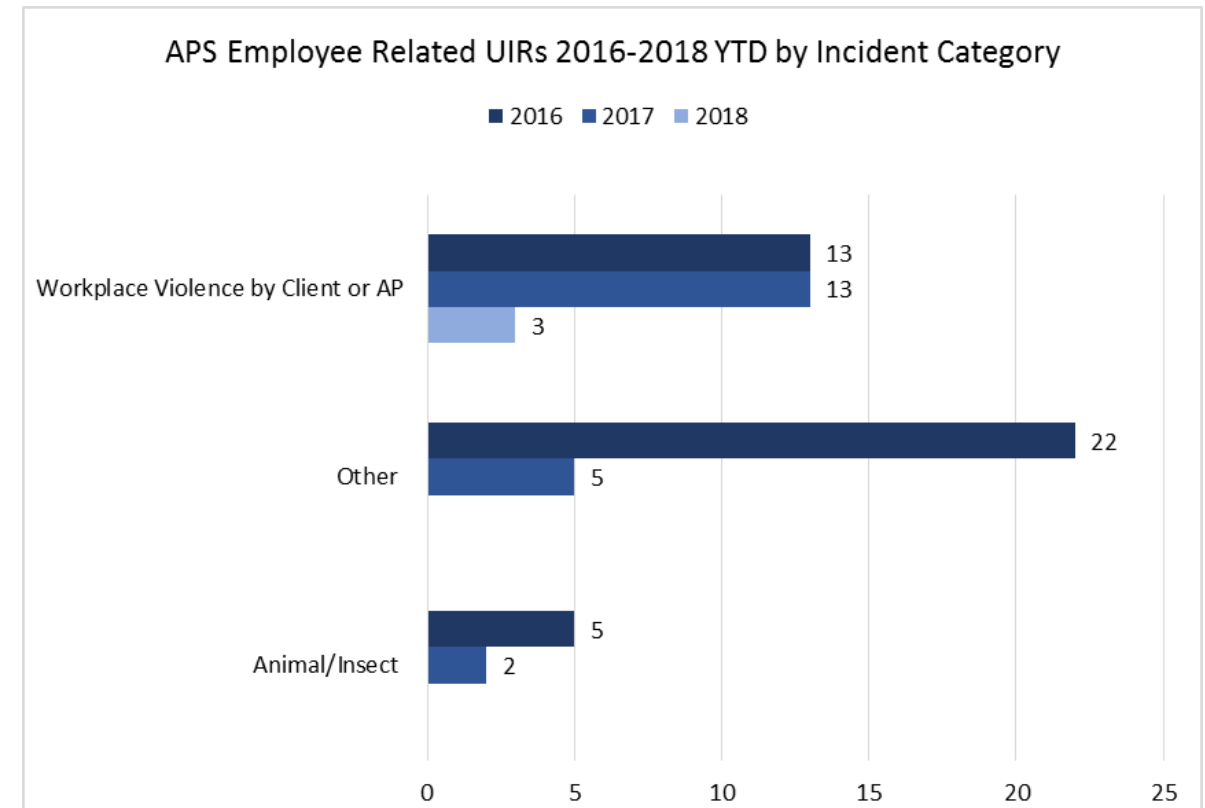


Analysis

43% “Workplace
Violence”

10% “Animal/Insect”

47% “Other”



Analysis

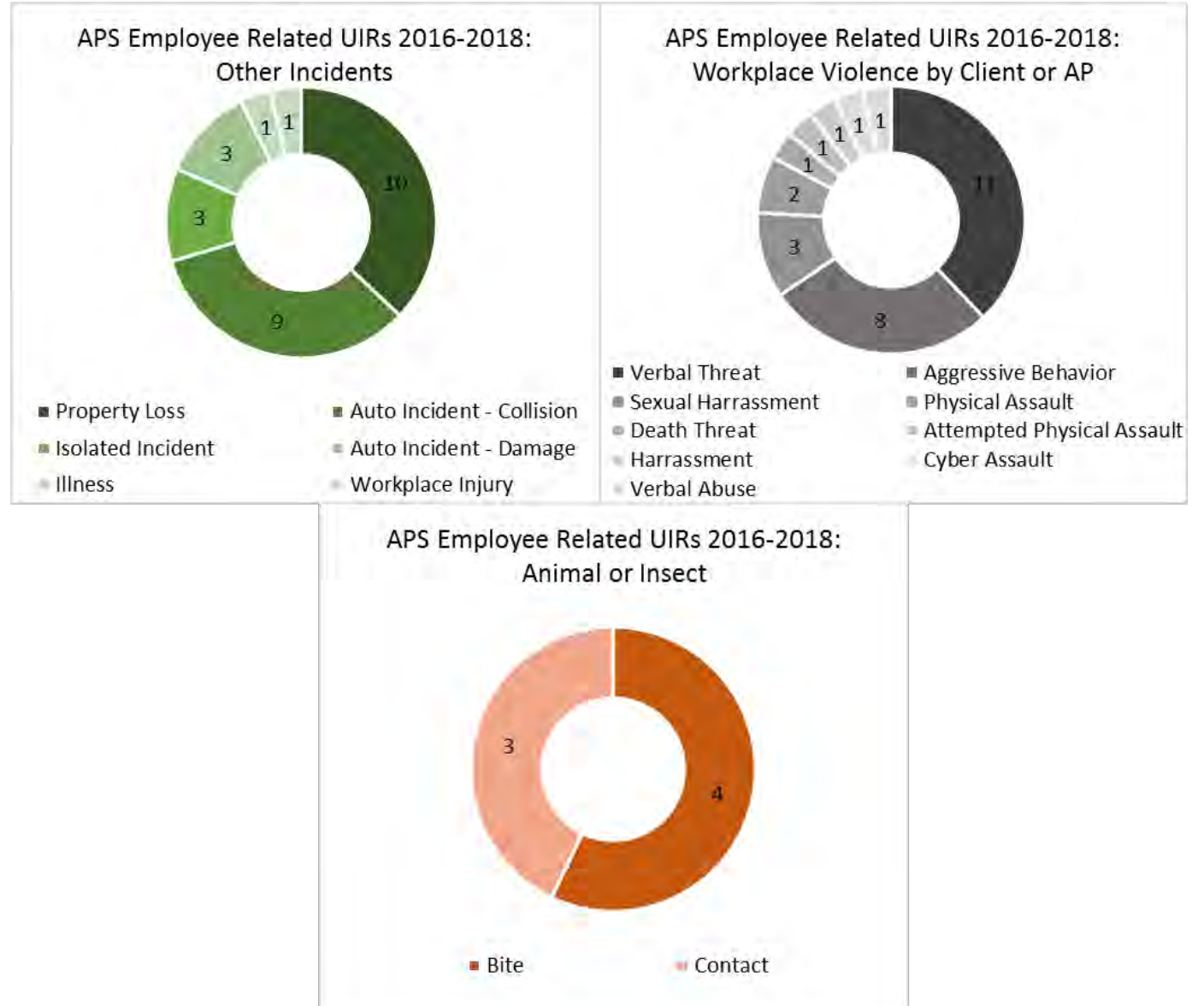
11 Verbal Threats

10 Property Loss

9 Auto Incidents

8 Aggressive Behavior

4 Animal Bites



Process & Structure

Training Goal

This training will equip APS investigators with the ability to:

- a) identify the warning signs of potentially dangerous environments,
- b) take precautions to avoid potentially dangerous environments, and;
- c) respond in a safe manner if exposed to a dangerous situation.



Training Objectives

15 Objectives – “Identify when to involve law enforcement, animal control, the QA RN, or other parties to maintain safety in the field”





Safety Risks

Faulty Structures
Hoarding Behavior
Mold & Asbestos
Anti-Government
Sentiment
Animals & Parasites

Communicable
Diseases
Drug Use
Mental Health
Hostile Individuals
Chemical Hazards

Blended Curriculum

6 Computer Based Trainings

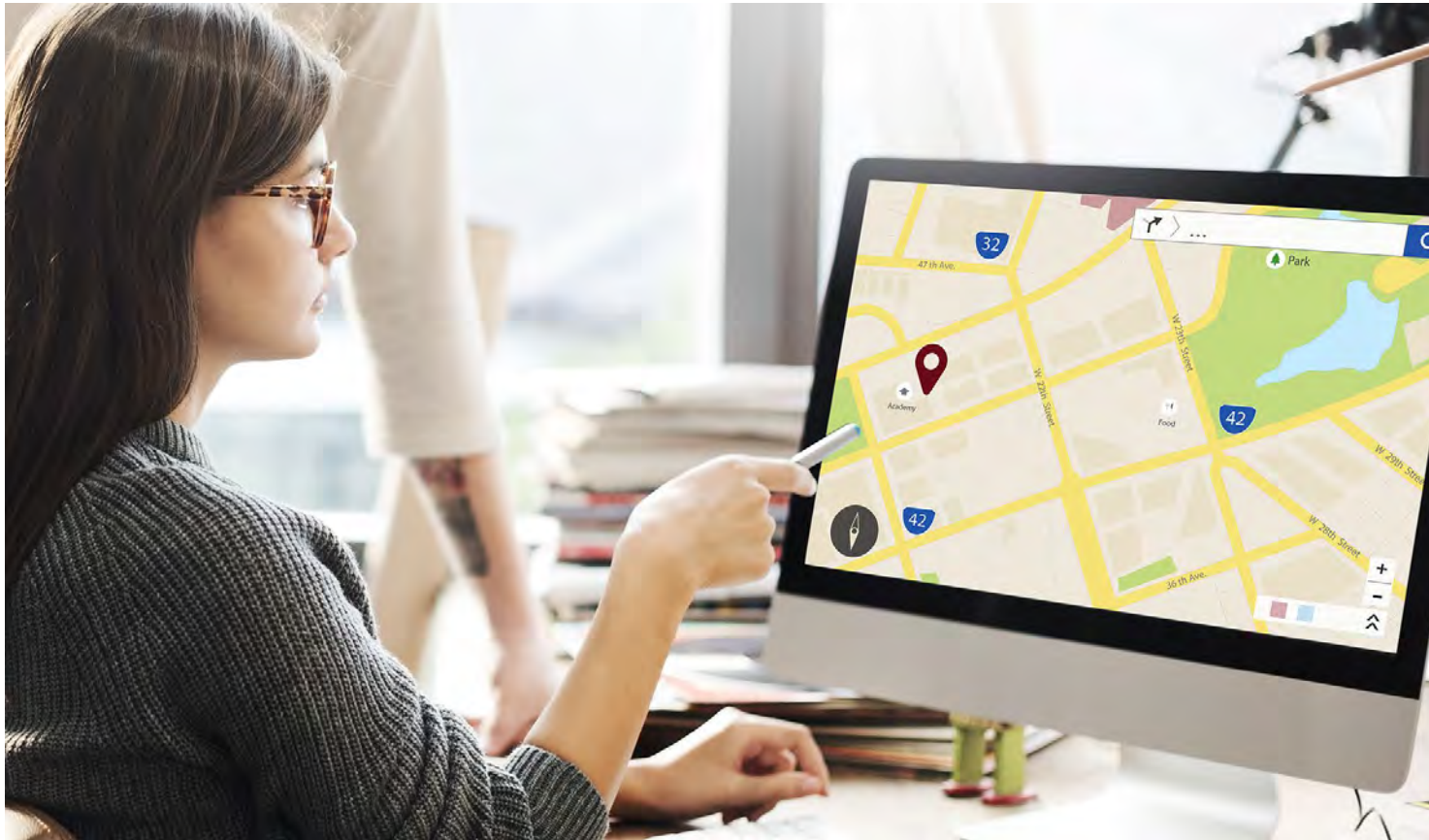
1 Classroom Workshop





Notes & Activity Workbook

Computer Based Learnings (CBTs)



CBT 1 – Planning Precautions

Case Intake & Review

Safety Consultation

Safety Desk Aid

Research



CIU



District



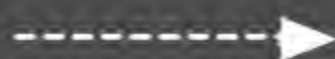
Supervisor



Consultation



Research



Adult Protective Services
Safety Issues for APS Professionals Desk Aide

APS professionals shall not enter or remain in unsafe situations. To promote safety of APS professionals, the following safety issues should be considered and discussed at the point of case assignment and at any time new safety issues emerge during the course of the investigation.

Safety Issues – Low:

- | | |
|--|---|
| ➤ Animals in the home (ensure they are secure) | ➤ History (2+ years ago) of drug activity in the home |
| ➤ History (2+ years ago) of suicide attempt or violence towards others | ➤ Presence of pests |

Safety Issues – Moderate: **Supervisory Consultation Required

- | | |
|---|---|
| ➤ Active criminal activity in the neighborhood | ➤ History of serious, non-lethal physical harm to another |
| ➤ Active suicidal or homicidal preoccupation | ➤ Present communicable disease or blood borne pathogens |
| ➤ High potential for extreme weather conditions for travel | ➤ Visit is outside normal business hours |
| ➤ Recently terminated restraining orders | ➤ Location is extremely isolated or dangerous |
| ➤ Convicted sex offender in the home | ➤ Limited mobile device reception |
| ➤ Hoarding behaviors limit accessibility making home unsafe to navigate | ➤ Medication noncompliance that may impact behavior |
| ➤ Experiencing homelessness but limited information provided to locate | |

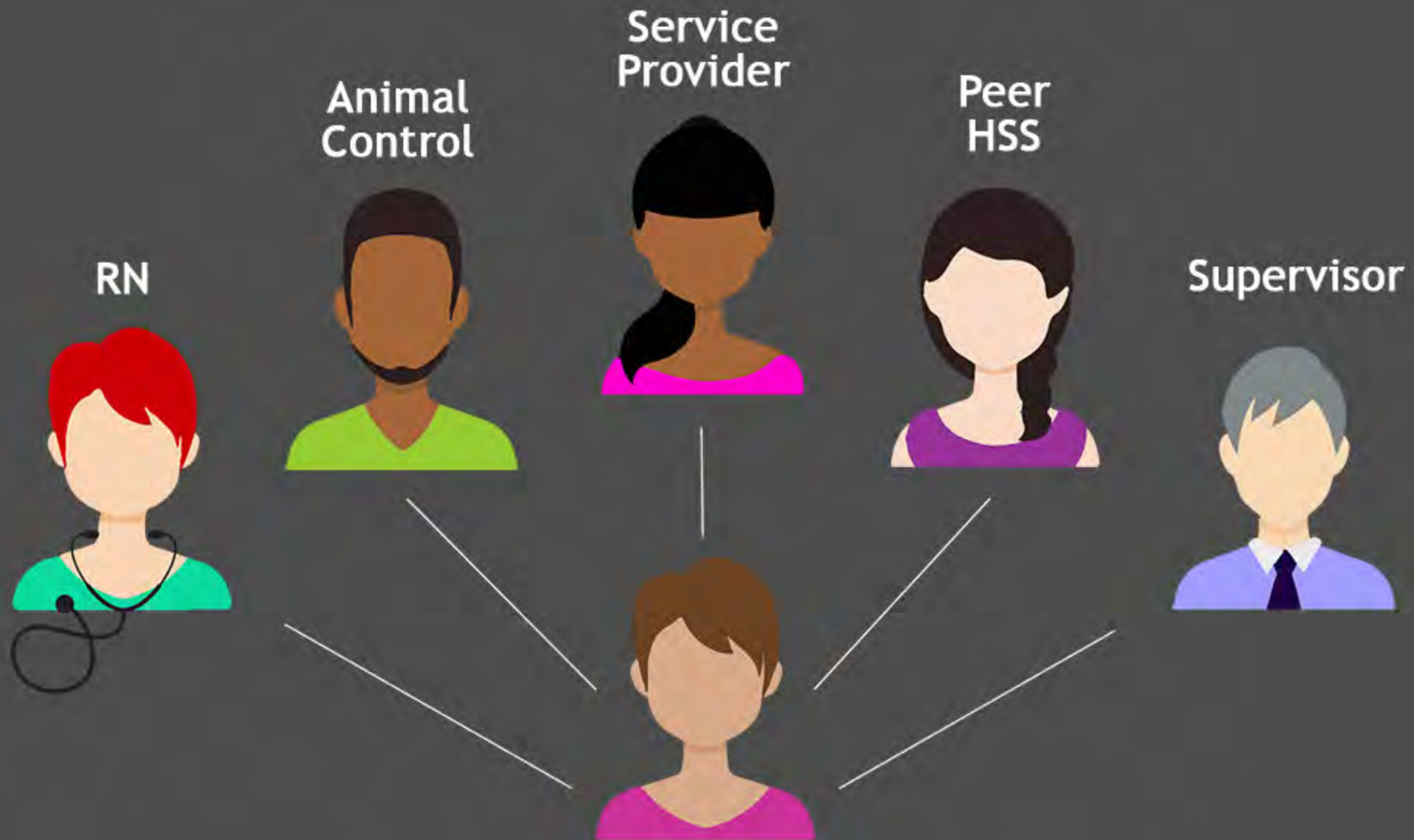
Safety Issues – High: **Supervisory Consultation Required

- | | |
|---|--|
| ➤ Active drug activity in the home | ➤ Active, recent, and/or history of domestic violence |
| ➤ Danger to self or others with plan and intent | ➤ Aggressive or assaultive behavior |
| ➤ Serious (potentially lethal) suicide or homicide attempt within the past week | ➤ Other community agencies will not enter the home |
| ➤ Unsecured weapons in the home | ➤ Past threats/verbal aggression toward APS professionals and/or other service providers |
| ➤ Animal hoarding. Excessive animal urine or feces | ➤ Serious structural concerns in home environment |
| ➤ Active restraining orders | ➤ Command hallucination(s) instructing harm to self or others |
| ➤ Unexpected or unreported strangers in the home that may pose threat | |
| ➤ Unsecured, uncontrolled dangerous animals on property | |

APS policy prohibits going into or remaining in the environment if any of the following safety issues are present:

- | | |
|---|--|
| ▪ Individual exhibits unusual/dangerous behaviors or aggressive anti-government mentality | ▪ There is evidence of a current active violent dispute in the home, and/or actual violence is exhibited toward the APS professional |
| ▪ There is evidence of illegal activity in the home | ▪ Suspicion of an environment in which volatile, toxic, or flammable chemicals are found or equipment is possessed by any person for the purpose of manufacturing a dangerous drug |
| ▪ Physical, written, or verbal threats against the current APS professional | ▪ Safe and clear pathway does not exist in the home due to hoarding and/or presence of bodily fluids throughout the home |
| ▪ Home is deemed uninhabitable by a governing authority | |
| ▪ Significant past infestation | |
| ▪ "No Trespassing" signs | |

When moderate or high safety issues are identified, a supervisory consultation shall occur to develop a plan for HSS/HSW safety and shall be documented in the "Safety Issue for Case Worker Detail" section of the Case Information page in AZAPSS.



Research Information



APS Case Information



Court Information



Demographics



Health Information



CBT 2 – Arrival Safety

Scheduling

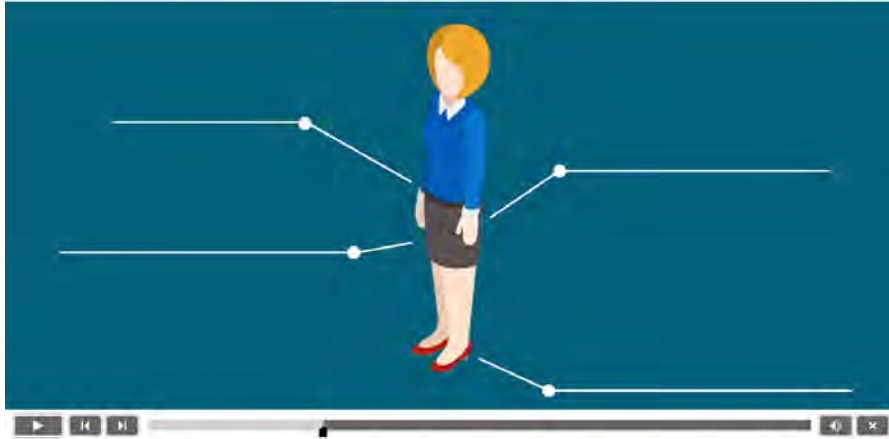
Communications

Travel Safety

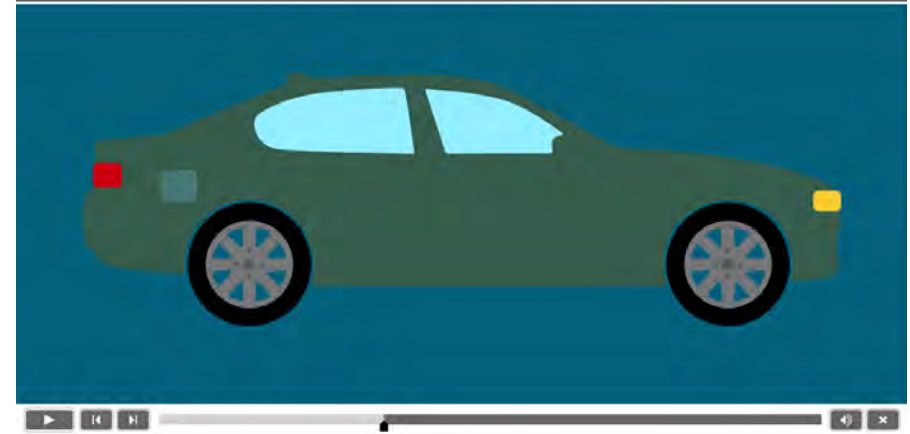
Parking

Initial Entry

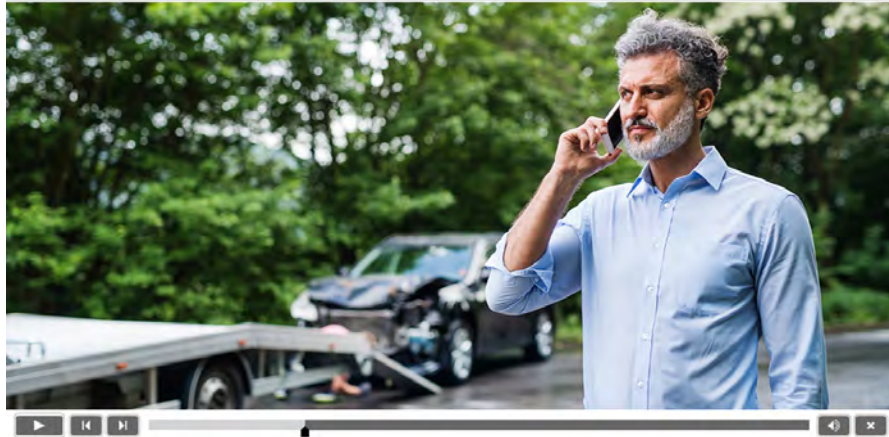
Personal Attire



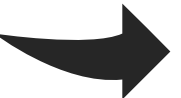
Vehicle Safety

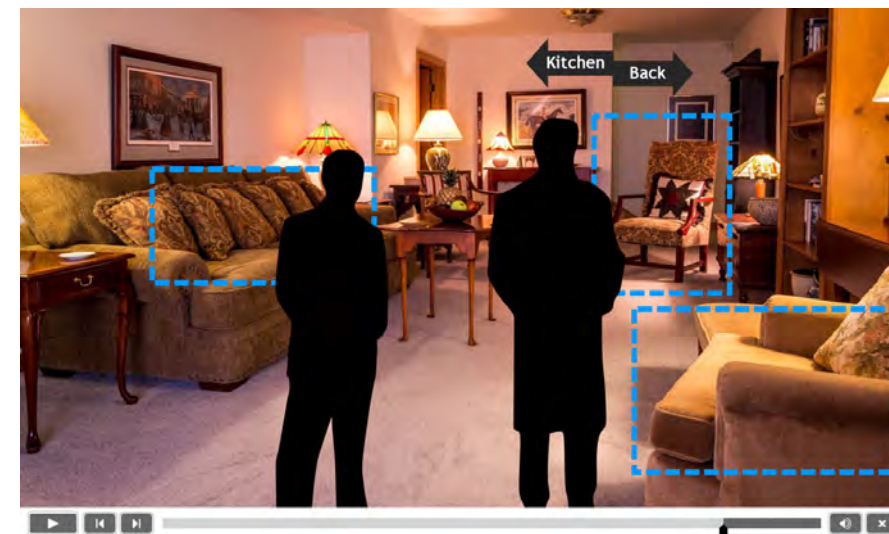


Communications



Time and Location







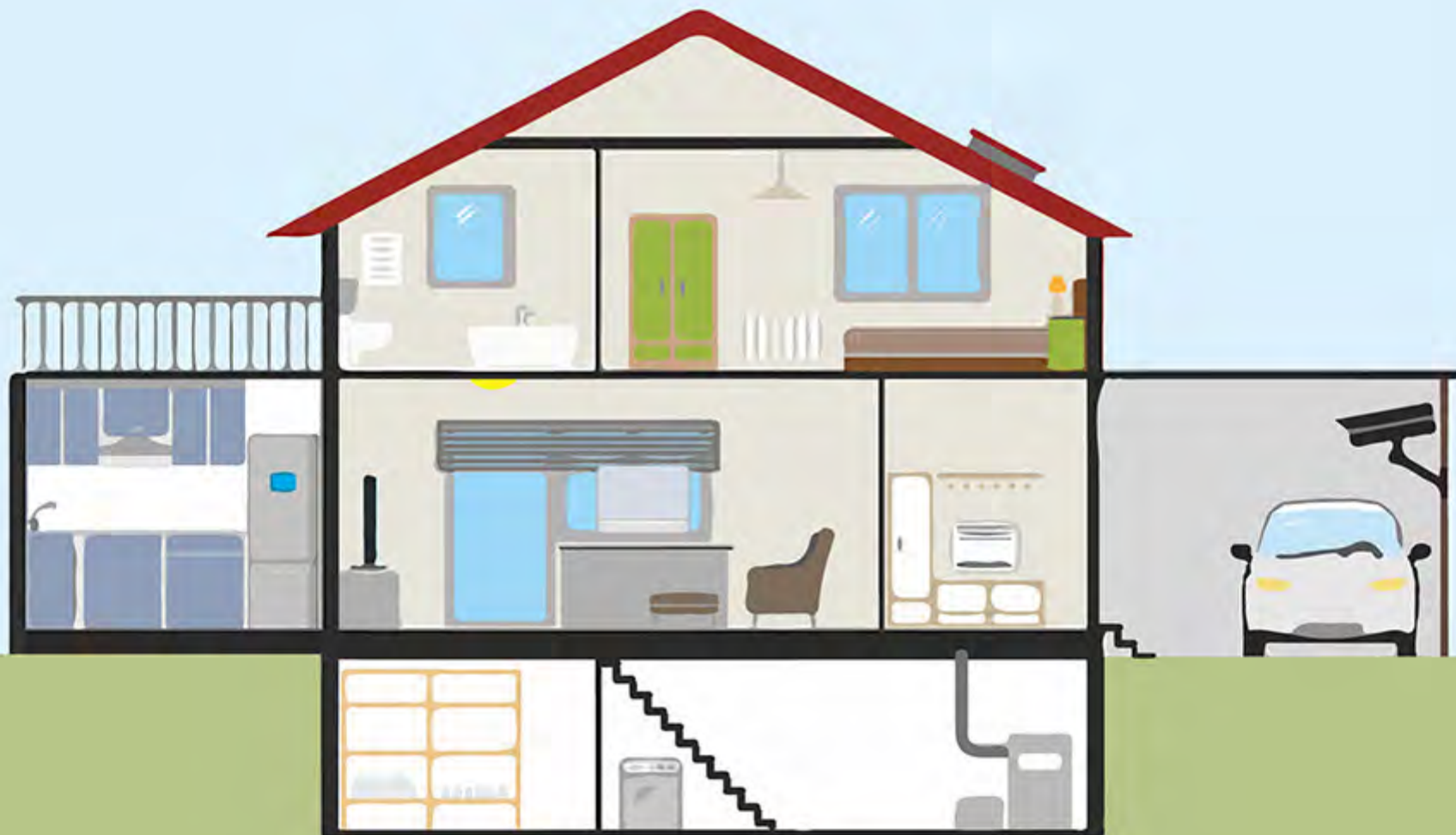
CBT 3 – Environmental Risks

Faulty Structures

Animals & Parasites

Mold & Asbestos

Drug Manufacturing





CBT 4 – Behavioral Risks

Body Language

Aggression

Threatening Behavior

Drug Use

Mental Health

De-Escalation

Overview

Next Section





CBT 5 – Clinical Risks

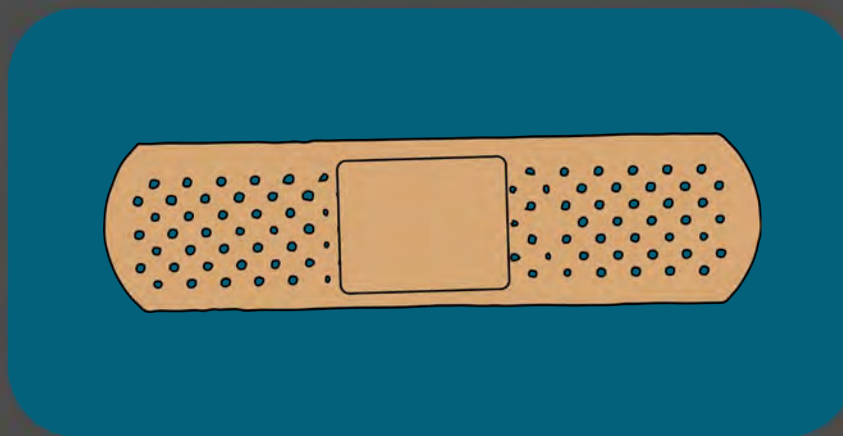
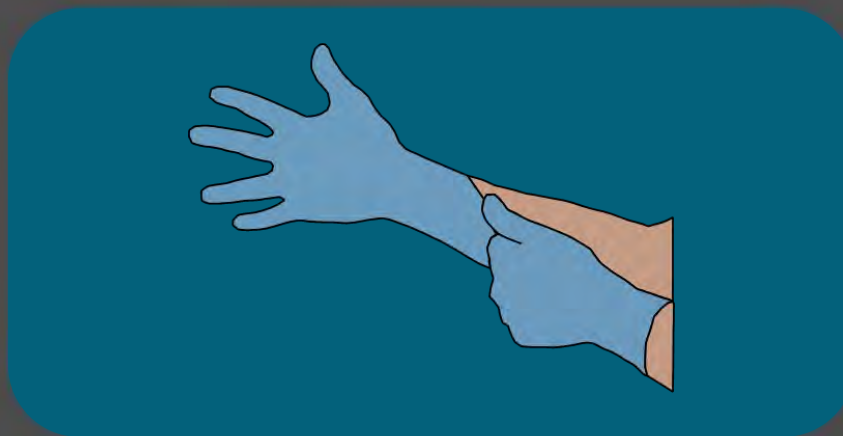
Communicable
Diseases

Bloodborne
Pathogens

Universal Precautions

Transmission Modes

Protective Equipment





CBT 6 – Reporting

Unusual Incidents

Critical Incidents

Auto Incidents

First Response

Classroom Workshop

Workshop Overview

Build Skills

Learn from Peers

Discuss Real Situations



Planning Precautions

Arrival Safety

Environmental Risks

Behavioral Risks

Clinical Risks

Closing

Results

Results

Increased Precaution

Increased Discussion

Improved Sense of Investment

Attention from other Divisions



Additional Observations

Inconsistency in Supervision

Different Sense of Risk

Not Reporting Enough

Not aware of Emergency Line



Next Steps

Emotional & Psychological Risks

Supervisor Training to Support

Rural & Urban Investigation

Refresher Course



Q/A

References

Ghesquiere, Angela, Stacey B. Plichta, Caitlin McAfee, and Geoff Rogers.

2018. "Professional Quality of Life of Adult Protective Service Workers." *Journal of Elder Abuse and Neglect* 30(1): 1-19.

National Association of Social Workers (NASW). 2004. *Social Workers*

and Safety. Accessed on July 31, 2019.<https://www.socialworkers.org/LinkClick.aspx?fileticket=ESTCCZA4HAE%3d&portalid=0>

Williams, Sharon E., Nicholas I. Quenton, Alan Kirk, and Takeisha Wilson.

2011. "A Recent Look at the Factors Influencing Workforce Retention in Public Child Welfare." *Children and Youth Services Review* 33(1): 157-160.

Go to www.menti.com and use the code 29 71 98



Do you have any questions?

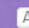
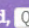
 Mentimeter



No questions from the audience!

Incoming questions will show up here so that you can answer them one by one.



 to mark as answered,  to see more questions



 0